

BRIDGE POINT TACOMA 2MM

bridgepointtacoma2mm.com | 4204 S Burlington Way | Tacoma, WA 98409



ACCESS. SIZE. FLEXIBILITY.

INTRODUCING ONE OF PUGET SOUND'S NEXT
MAJOR INDUSTRIAL DEVELOPMENTS, JUST MINUTES
FROM INTERSTATE 5 & THE PORT OF TACOMA

AVAILABLE Q3 2025-Q1 2026



VIEW PROPERTY



VIEW PHOTOS



**TAKE
VIRTUAL
TOUR**

TODD CLARKE

todd.clarke@kidder.com
253.722.1422

MATT MURRAY

matt.murray@kidder.com
206.248.6541

TY CLARKE

ty.clarke@kidder.com
253.722.1419

MATT MCLENNAN, SIOR, CCIM

matt.mclennan@kidder.com
253.722.1458



**Kidder
Mathews**

SPECULATIVE DESIGN | 4-BUILDING OPTION



BUILDING A

3810 S Burlington Way

- 517,042 building SF
- 125DH / 4GL
- ±228 trailer spaces
- ±224 car spaces
- 40' clear height
- Available late Q3 2025

BUILDING B

4204 S Burlington Way

- 957,726 building SF
- 184DH / 4GL
- ±396 trailer spaces
- ±424 car spaces
- 40' clear height
- Available Q3 2025

BUILDING C

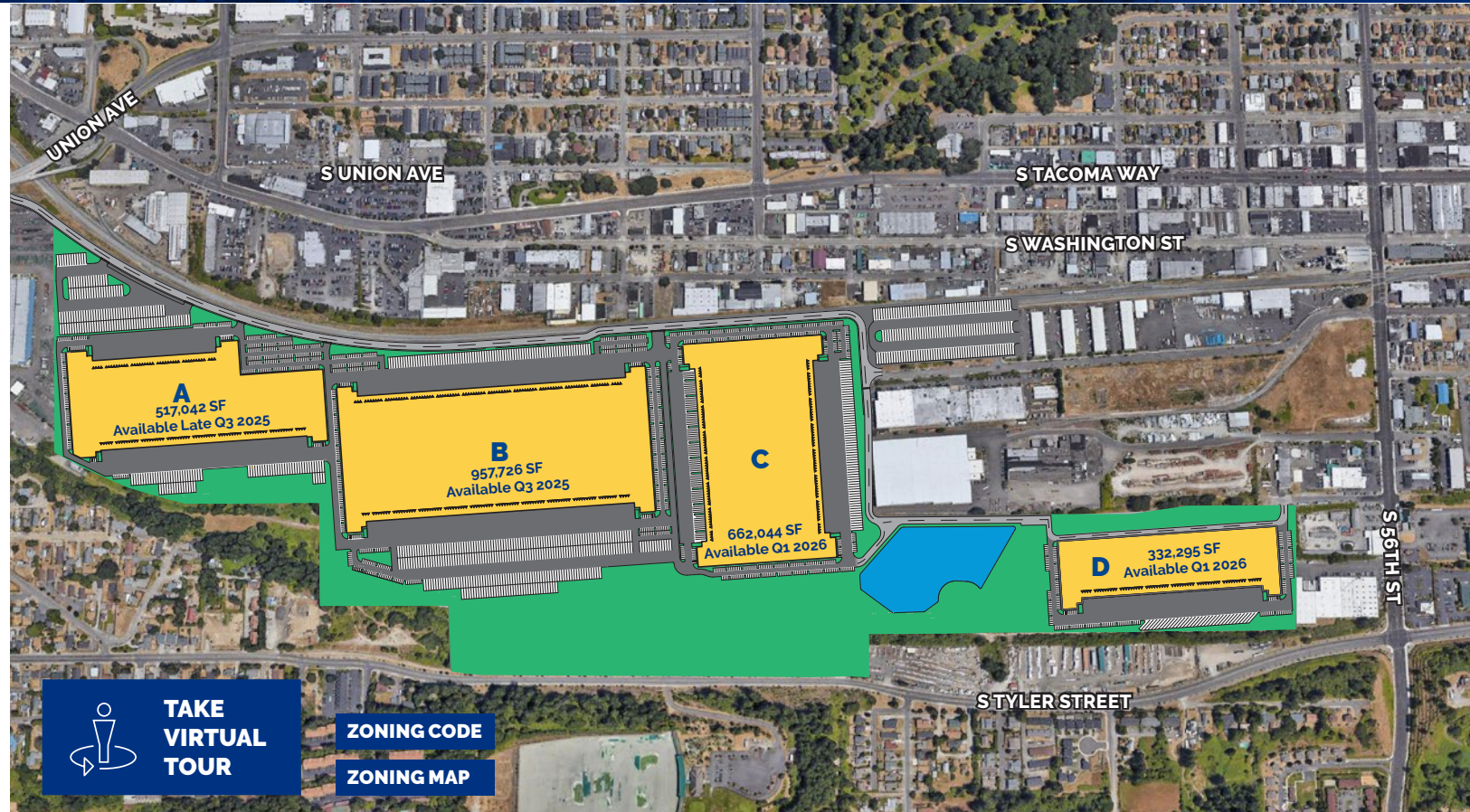
4708 S Burlington Way

- 662,044 building SF
- 118DH / 4GL
- ±223 trailer spaces
- ±414 car spaces
- 40' clear height
- Available Q1 2026

BUILDING D

5024 S Madison St

- 332,295 building SF
- 60DH / 2GL
- ±32 trailer spaces
- ±192 car spaces
- 40' clear height
- Available Q1 2026



±160 AC
SITE AREA



±2.5M SF
BUILDING AREA



1,349
PARKING SPACES



486DH/14GL
DOOR POSITIONS



891
TRAILER PARKING

bridgepointtacoma2mm.com | 5802 S Burlington Way | Tacoma, WA

This information supplied herein is from sources we deem reliable. It is provided without any representation, warranty, or guarantee, expressed or implied as to its accuracy. Prospective Buyer or Tenant should conduct an independent investigation and verification of all matters deemed to be material, including, but not limited to, statements of income and expenses. Consult your attorney, accountant, or other professional advisor.



FREEWAY ACCESS



TO INTERSTATE 5

1 mile
4 minutes

TO PORT OF TACOMA

5 miles
10 minutes

TO WA-16

1 mile
3 minutes

HIGHLIGHTS

Conveniently located just 5 miles from the Port of Tacoma, Bridge Point Tacoma 2MM offers excellent exposure with direct access to Interstate 5

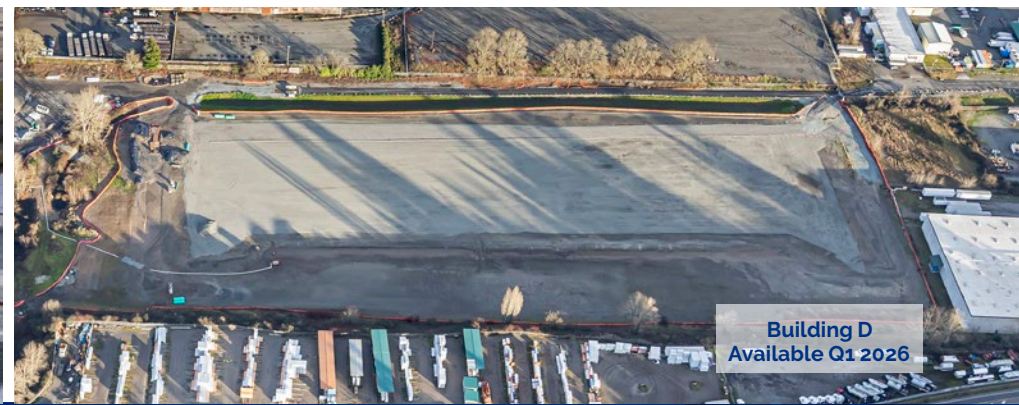


bridgepointtacoma2mm.com | 5802 S Burlington Way | Tacoma, WA

This information supplied herein is from sources we deem reliable. It is provided without any representation, warranty, or guarantee, expressed or implied as to its accuracy. Prospective Buyer or Tenant should conduct an independent investigation and verification of all matters deemed to be material, including, but not limited to, statements of income and expenses. Consult your attorney, accountant, or other professional advisor.



PROPERTY PHOTOS



bridgepointtacoma2mm.com | 5802 S Burlington Way | Tacoma, WA

This information supplied herein is from sources we deem reliable. It is provided without any representation, warranty, or guarantee, expressed or implied as to its accuracy. Prospective Buyer or Tenant should conduct an independent investigation and verification of all matters deemed to be material, including, but not limited to, statements of income and expenses. Consult your attorney, accountant, or other professional advisor.



51 MILLION+ SF WORLDWIDE

BRIDGE is a vertically integrated real estate operating company and investment manager focused on the **ACQUISITION** and **DEVELOPMENT** of **CLASS A INDUSTRIAL PROPERTIES** in supply-constrained **CORE** markets in the U.S. and the U.K.

Our people **EMBRACE COMPLEXITY** and execute with **CREATIVITY AND CERTAINTY**. The results of our expertise and efforts are exceptional investor returns on irreplaceable industrial assets.



AWARDS	
New Good Neighbor, NJ Business & Industry Association	2021
Industrial Project of the Year, SFBJ	2020, 2018
Industrial Speculative Development of the Year, NAIOP Chicago	2020, 2019, 2018, 2017
Deal of the Year, NAIOP New Jersey	2020, 2018
Most Significant Industrial Transaction of the Year, IREJ	2019
Developer of the Year, NAIOP South Florida	2019, 2018, 2016
Developer of the Year, NAIOP Chicago	2019, 2015
Community Appearance Award, City of Fort Lauderdale	2019, 2018
Developer of the Year, Chicago Commercial Real Estate Awards	2018, 2015, 2011
Project of the Year, NAIOP South Florida	2017
Industrial Redevelopment of the Year, NAIOP Chicago	2015, 2014

HEADQUARTERS

9525 W. Bryn Mawr Ave., Rosemont, IL 60018 | 312 683 7230

www.bridgeindustrial.com